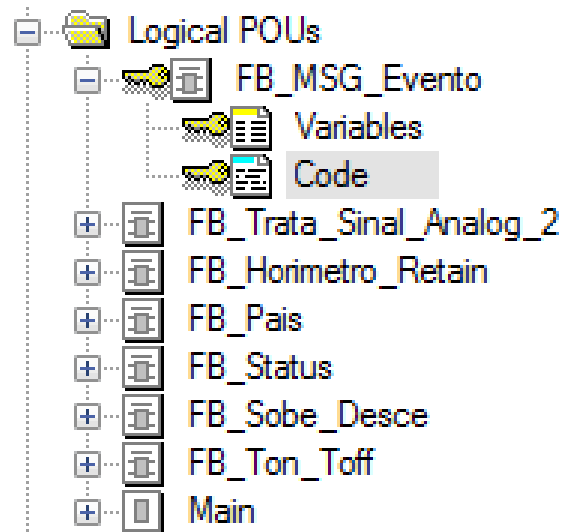
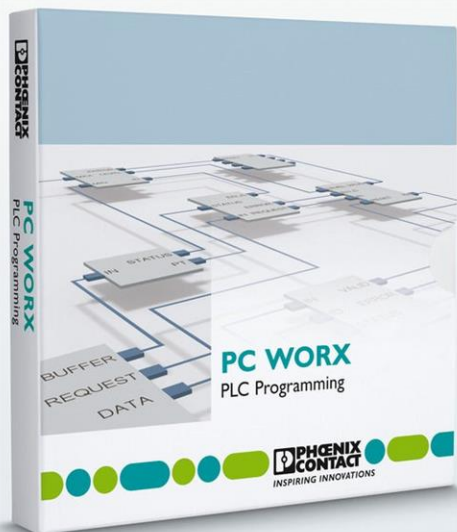
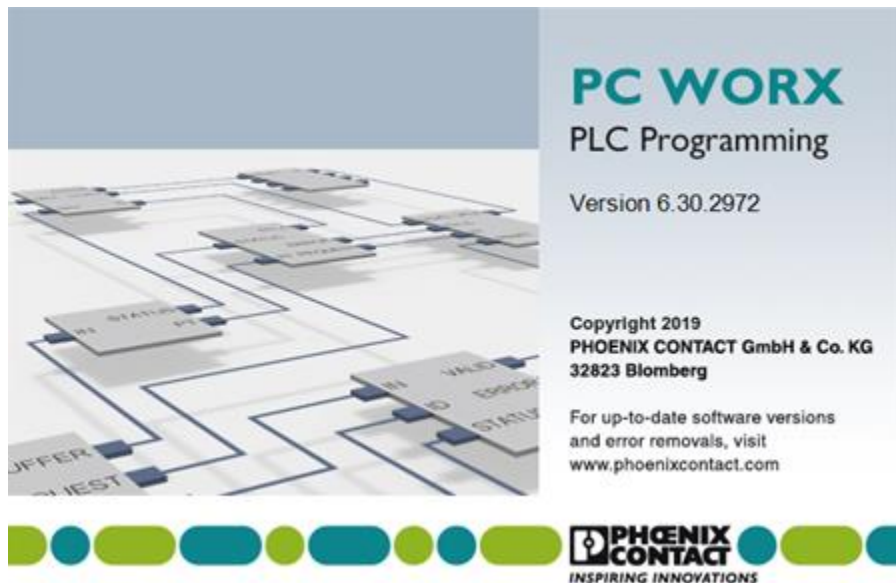


Colocar senha de acesso em Function Blocks



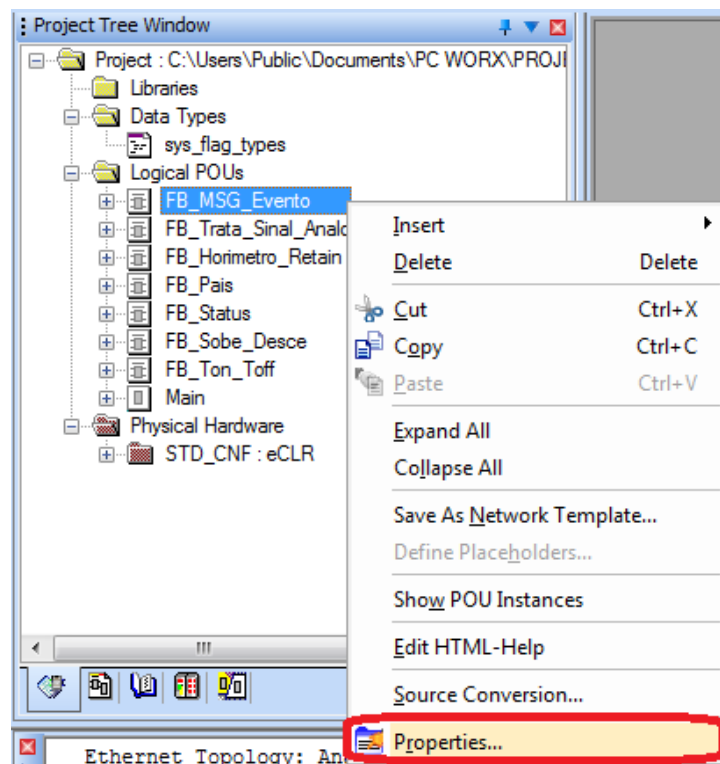
Colocar senha de acesso em Function Blocks

Primeiramente é importante saber que essa funcionalidade somente é possível na versão PCWORX PRO e não no Express.



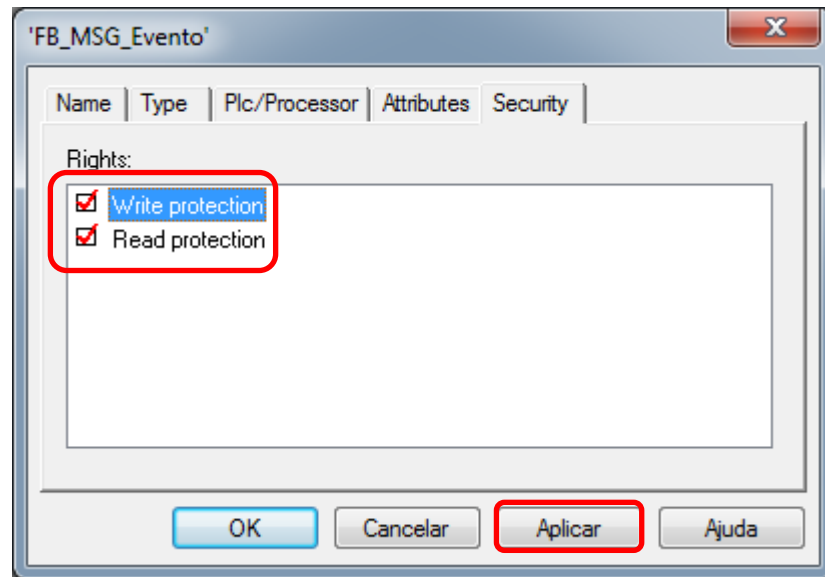
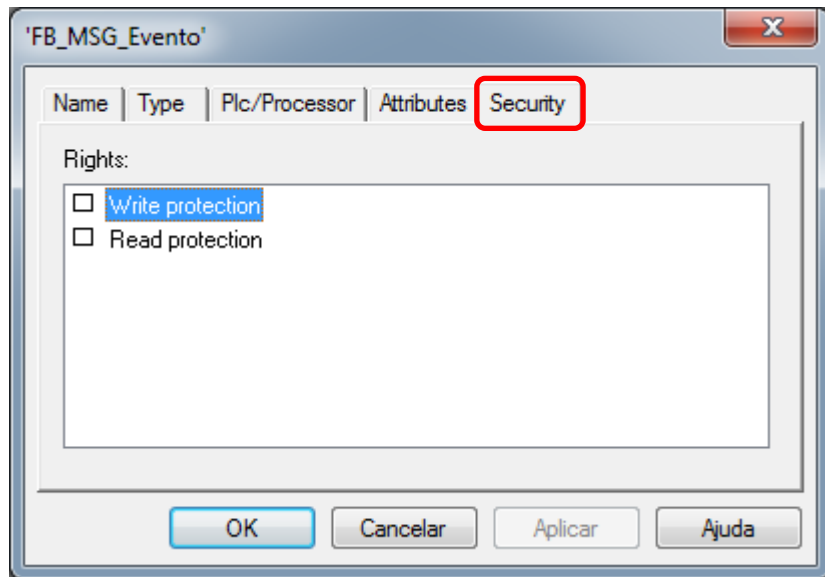
Colocar senha de acesso em Function Blocks

Alterar nas propriedades do function block, os direitos de leitura e escrita.



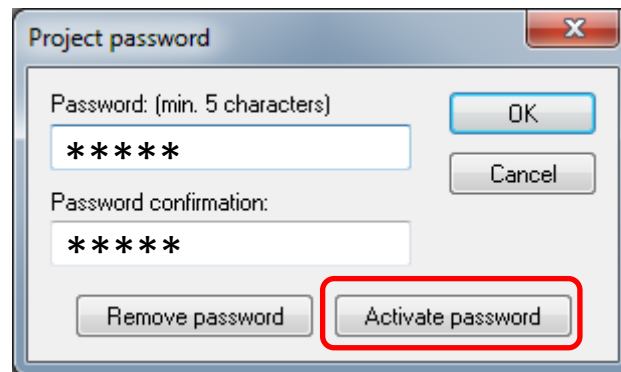
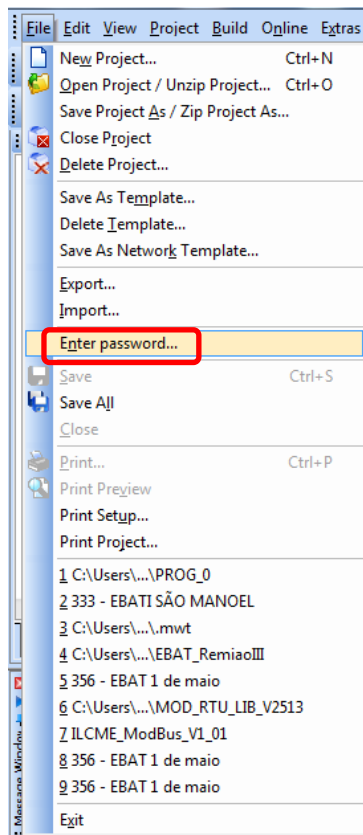
Colocar senha de acesso em Function Blocks

Alterar nas propriedades do function block, os direitos de leitura e escrita.

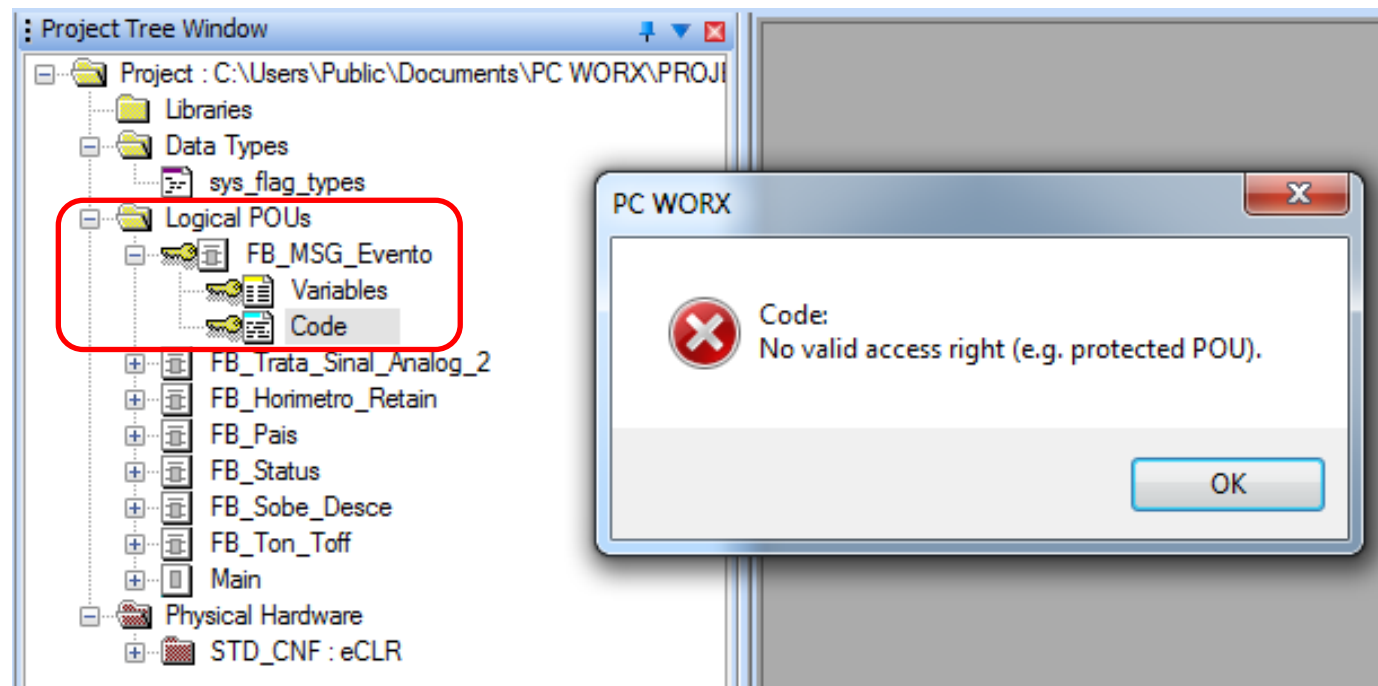


Colocar senha de acesso em Function Blocks

Definir a senha e ativar.

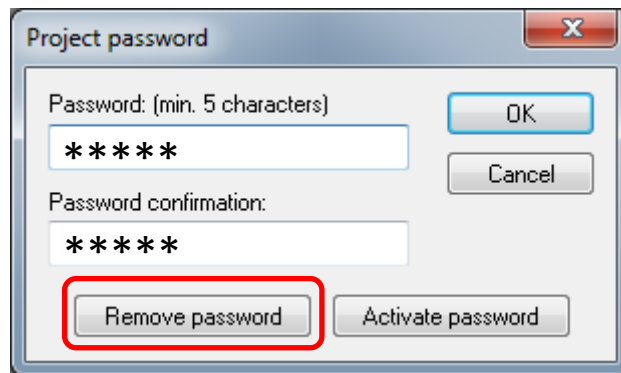
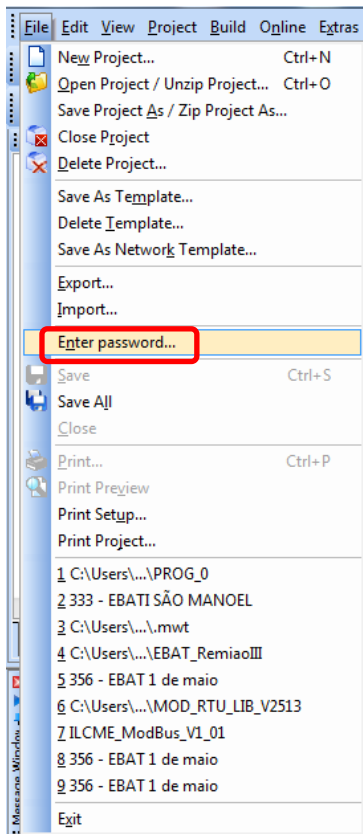


Colocar senha de acesso em Function Blocks



Colocar senha de acesso em Function Blocks

Remover ou desativar a senha.





INSPIRING INNOVATIONS

www.phoenixcontact.com.br