



Project tree

Devices

- PassoPassoPhoenix
 - Add new device
 - Devices & networks
 - PLC_1 [CPU 1214C DC/D...
 - Device configuration
 - Online & diagnostics
 - Program blocks
 - Technology objects
 - External source files
 - PLC tags
 - PLC data types
 - Watch and force tables
 - Online backups
 - Traces
 - Device proxy data
 - Program info
 - PLC alarm text lists
 - Local modules
 - Ungrouped devices
 - Common data
 - Documentation settings
 - Languages & resources
 - Online access
 - Card Reader/USB memory

Details view

PassoPassoPhoenix ▸ Devices & networks

Topology view | Network view | Device view

Network | Connections | HMI connection

Relations

PLC_1
CPU 1214C

100%

PROFINET interface_1 [X1 : PN(LAN)]

Properties | Info | Diagnostics

General | IO tags | System constants | Texts

General

Ethernet addresses

Time synchronization

Operating mode

Advanced options

Web server access

Hardware identifier

Ethernet addresses

Interface networked with

Subnet: Not networked

Add new subnet

IP protocol

Set IP address in the project

IP address: 10 . 0 . 9 . 100

Subnet mask: 255 . 255 . 0 . 0

Use router

Router address: 0 . 0 . 0 . 0

IP address is set directly at the device

Hardware catalog

Options

Catalog

<Search>

Filter Profile: <All>

- Controllers
- HMI
- PC systems
- Drives & starters
- Network components
- Detecting & Monitoring
- Distributed I/O
- Power supply and distribution
- Field devices
- Other field devices

Hardware catalog | Online tools | Tasks | Libraries

Information

Project tree

Devices

- PassoPassoPhoenix
 - Add new device
 - Devices & networks
 - PLC_1 [CPU 1214C DC/D...
 - Device configuration
 - Online & diagnostics
 - Program blocks
 - Technology objects
 - External source files
 - PLC tags
 - PLC data types
 - Watch and force tables
 - Online backups
 - Traces
 - Device proxy data
 - Program info
 - PLC alarm text lists
 - Local modules
 - Ungrouped devices
 - Common data
 - Documentation settings
 - Languages & resources
 - Online access
 - Card Reader/USB memory

Details view

PassoPassoPhoenix ▸ Devices & networks

Topology view Network view Device view

Network Connections HMI connection Relations

PLC_1
CPU 1214C

100%

PROFINET interface_1 [X1 : PN(LAN)]

Properties Info Diagnostics

General IO tags System constants Texts

General

Ethernet addresses

Time synchronization

Operating mode

Advanced options

Web server access

Hardware identifier

Ethernet addresses

Interface networked with

Subnet: Not networked

Add new subnet

IP protocol

Set IP address in the project

IP address: 10 . 0 . 9 . 100

Subnet mask: 255 . 255 . 0 . 0

Use router

Router address: 0 . 0 . 0 . 0

IP address is set directly at the device

Totally Integrated Automation PORTAL

Hardware catalog

Options

Catalog

<Search>

Filter Profile: <All>

- Controllers
- HMI
- PC systems
- Drives & starters
- Network components
- Detecting & Monitoring
- Distributed I/O
- Power supply and distribution
- Field devices
- Other field devices
 - Additional Ethernet devices
 - PROFINET I/O
 - Drives
 - Encoders
 - Gateway
 - I/O
 - Phoenix Contact
 - PLC
 - ILC 131 ETH
 - ILC 131 ETH XC
 - ILC 151 ETH
 - ILC 151 ETH XC
 - Ident Systems
 - Sensors
 - PROFIBUS DP

Information

Project PassoPassoPhoenix created.

Project tree

Devices

- PassoPassoPhoenix
 - Add new device
 - Devices & networks
 - PLC_1 [CPU 1214C DC/D...]
 - Device configuration
 - Online & diagnostics
 - Program blocks
 - Technology objects
 - External source files
 - PLC tags
 - PLC data types
 - Watch and force tables
 - Online backups
 - Traces
 - Device proxy data
 - Program info
 - PLC alarm text lists
 - Local modules
 - Ungrouped devices
 - Unassigned devices
 - Common data
 - Documentation settings
 - Languages & resources
 - Online access
 - Card Reader/USB memory

Details view

PassoPassoPhoenix > Devices & networks

Topology view Network view Device view

Network Connections HMI connection Relations

PLC_1
CPU 1214C

ILC 131-ETH
ILC 131 ETH
Not assigned
GSD device_1

100%

GSD device_1 [Device]

Properties Info Diagnostics

General IO tags System constants Texts

General

Name: GSD device_1

Author: User

Comment:

Totally Integrated Automation PORTAL

Hardware catalog

Options

Catalog

<Search>

Filter Profile: <All>

- Controllers
- HMI
- PC systems
- Drives & starters
- Network components
- Detecting & Monitoring
- Distributed I/O
- Power supply and distribution
- Field devices
- Other field devices
 - Additional Ethernet devices
 - PROFINET IO
 - Drives
 - Encoders
 - Gateway
 - I/O
 - Phoenix Contact
 - PLC
 - ILC 131 ETH
 - ILC 131 ETH XC
 - ILC 151 ETH
 - ILC 151 ETH XC
 - Ident Systems
 - Sensors
 - PROFIBUS DP

Hardware catalog

Online tools

Tasks

Libraries

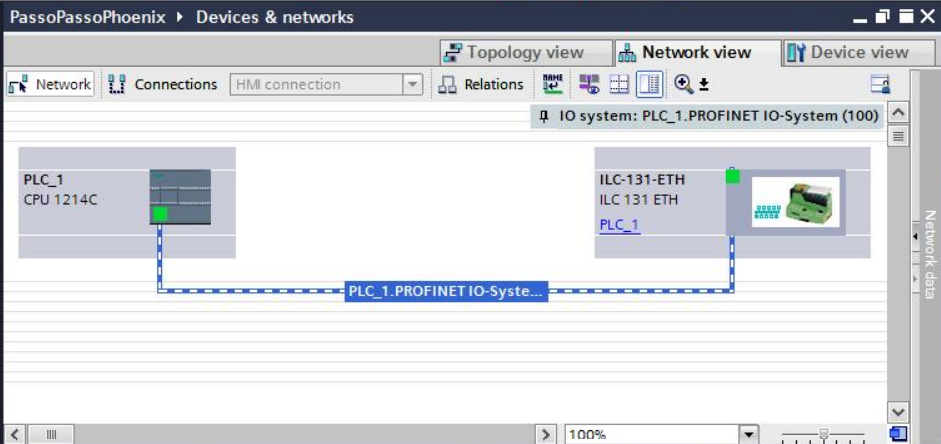
Information

Project tree

Devices

- PassoPassoPhoenix
 - Add new device
 - Devices & networks
 - PLC_1 [CPU 1214C DC/D...
 - Device configuration
 - Online & diagnostics
 - Program blocks
 - Technology objects
 - External source files
 - PLC tags
 - PLC data types
 - Watch and force tables
 - Online backups
 - Traces
 - Device proxy data
 - Program info
 - PLC alarm text lists
 - Local modules
 - Distributed I/O
 - Ungrouped devices
 - Common data
 - Documentation settings
 - Languages & resources
 - Online access
 - Card Reader/USB memory

Details view



PROFINET IO-System [IO-system]

Properties Info Diagnostics

General IO tags System constants Texts

General

Hardware identifier
Overview of addresses

Configuration of the IO system

IO controller: PLC_1

Name: PROFINET IO-System

Number: 100

Use name as extension for the PROFINET device name.

Hardware catalog

Options

Catalog

<Search>

Filter Profile: <All>

- Controllers
- HMI
- PC systems
- Drives & starters
- Network components
- Detecting & Monitoring
- Distributed I/O
- Power supply and distribution
- Field devices
- Other field devices
 - Additional Ethernet devices
 - PROFINET I/O
 - Drives
 - Encoders
 - Gateway
 - I/O
 - Phoenix Contact
 - PLC
 - ILC 131 ETH
 - ILC 131 ETH XC
 - ILC 151 ETH
 - ILC 151 ETH XC
 - Ident Systems
 - Sensors
 - PROFIBUS DP

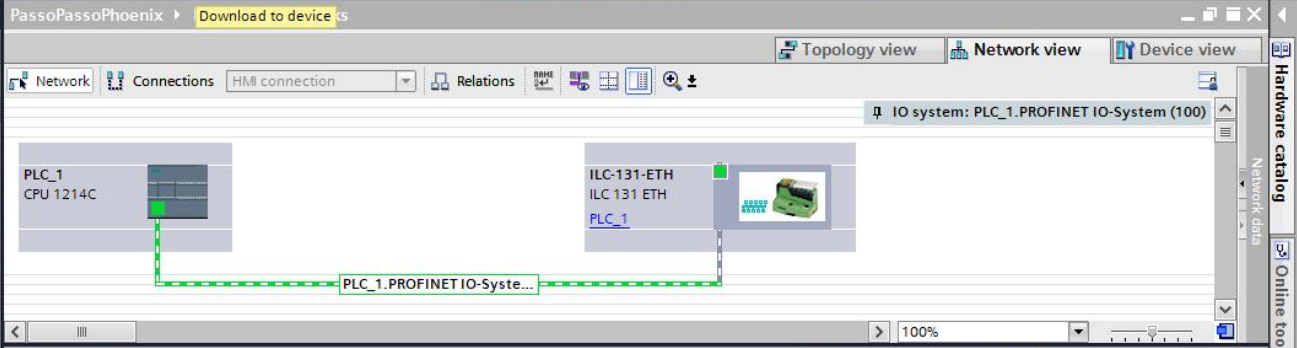
Information

Project tree

Devices

- PassoPassoPhoenix
 - Add new device
 - Devices & networks
 - PLC_1 | CPU 1214C DCD...
 - Device configuration
 - Online & diagnostics
 - Program blocks
 - Technology objects
 - External source files
 - PLC tags
 - PLC data types
 - Watch and force tables
 - Online backups
 - Traces
 - Device proxy data
 - Program info
 - PLC alarm text lists
 - Local modules
 - Distributed I/O
 - Ungrouped devices
 - Common data
 - Documentation settings
 - Languages & resources
 - Online access
 - Card Reader/USB memory

Details view



Interface [IE1]

Properties | Info | Diagnostics

General | IO tags | System constants | Texts

General

Ethernet addresses

Advanced options

- Real time settings

Hardware identifier

Ethernet addresses

Interface networked with

Subnet: PN/IE_1

Add new subnet

IP protocol

IP address: 10 . 0 . 9 . 2

Subnet mask: 255 . 255 . 0 . 0

Use router

Router address: 0 . 0 . 0 . 0

PROFINET

Generate PROFINET device name automatically

PROFINET device name: remotateste

Converted name: remotateste

Device number: 1

Project tree

Devices

- PassoPassoPhoenix
 - Add new device
 - Devices & networks
 - PLC_1 [CPU 1214C DCID...]**
 - Device configuration
 - Online & diagnostics
 - Program blocks
 - Technology objects
 - External source files
 - PLC tags
 - PLC data types
 - Watch and force tables
 - Online backups
 - Traces
 - Device proxy data
 - Program info
 - PLC alarm text lists
 - Local modules
 - Distributed I/O
 - Ungrouped devices
 - Common data
 - Documentation settings
 - Languages & resources
 - Online access
 - Card Reader/USB memory

Extended download to device

Configured access nodes of *PLC_1*

Device	Device type	Slot	Type	Address	Subnet
PLC_1	CPU 1214C DCID...	1 X1	PN/IE	10.0.9.100	PN/IE_1

Type of the PG/PC interface:

PG/PC interface:

Connection to interface/subnet:

1st gateway:

Select target device:

Device	Device type	Interface type	Address	Target device
PLC_1	CPU 1214C DCID...	PN/IE	10.0.9.100	PLC_1
--	--	PN/IE	Access address	--

Online status information: Display only error messages

- Found accessible device remotate1 [10.0.9.2]
- Scan completed. 1 compatible devices of 2 accessible devices found.
- Retrieving device information...
- Scan and information retrieval completed.

Converted name: remotateste

Device number: 1

Hardware catalog

Network view Device view

C_1.PROFINET IO-System (100)

Network data

Online tools

Tasks

Libraries

Diagnostics

Project tree

- Devices
 - PassoPassoPhoenix
 - Add new device
 - Devices & networks
 - PLC_1 | CPU 1214C DCD...
 - Device configuration
 - Online & diagnostics
 - Program blocks
 - Technology objects
 - External source files
 - PLC tags
 - PLC data types
 - Watch and force tables
 - Online backups
 - Traces
 - Device proxy data
 - Program info
 - PLC alarm text lists
 - Local modules
 - Distributed I/O
 - Ungrouped devices
 - Common data
 - Documentation settings
 - Languages & resources
 - Online access
 - Card Reader/USB memory

PassoPassoPhoenix ▶ Devices & networks

Topology view | Network view | Device view

Network | Connections | HMI connection | Relations

IO system: PLC_1.PROFINET IO-System (100)

Load results

Status and actions after downloading to device

Status	Target	Message	Action
✓	PLC_1	Downloading to device completed without error.	
⚠	Start modular...	Start modular after downloading to device	Start all

Download to device

Finish loading

Start PLC_1 (current mode: Startup)

Cancel

Finish | Load | Cancel

- ✓ 'DadosPneumatico' has been deleted successfully.
- ✓ 'DadosHorimetro' has been deleted successfully.
- ✓ 'DadosCompensadora' has been deleted successfully.
- ✓ 'DadosSensores' has been deleted successfully.
- ✓ 'DadosAnalogico' has been deleted successfully.
- ✓ 'DadosPartida' has been deleted successfully.
- ✓ 'DadosMotores' has been deleted successfully.
- ✓ 'DadosHorimetros' has been deleted successfully.

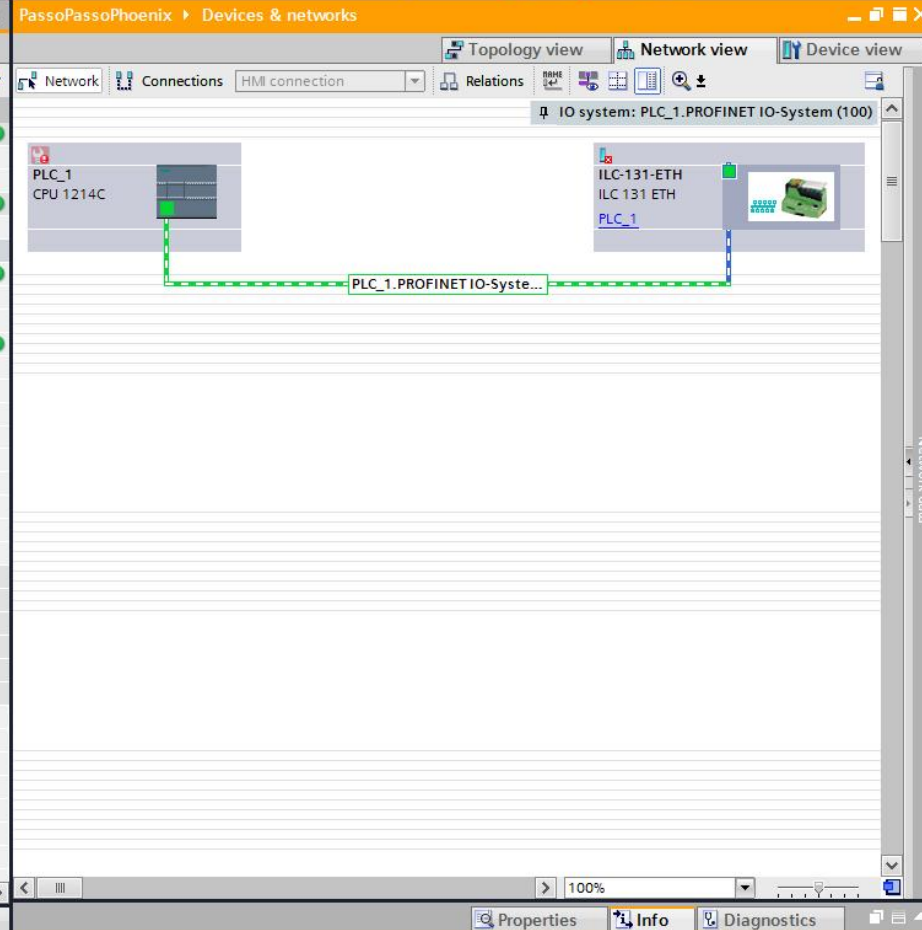
Project tree

Devices

- PassoPassoPhoenix
 - Add new device
 - Devices & networks
 - PLC_1 [CPU 1214C ...]
 - Device configurat...
 - Online & diagnost...
 - Program blocks
 - Technology objects
 - External source file...
 - PLC tags
 - PLC data types
 - Watch and force t...
 - Online backups
 - Traces
 - Device proxy data
 - Program info
 - PLC alarm text lists
 - Local modules
 - Distributed I/O
 - Ungrouped devices
 - Common data
 - Documentation setti...
 - Languages & resource
 - Online access
 - Card Reader/USB memory

Details view

Portal view Overview Devices & ne...



Hardware catalog

Options

Catalog

<Search>

Filter Profile: <All>

- Controllers
- HMI
- PC systems
- Drives & starters
- Network components
- Detecting & Monitoring
- Distributed I/O
- Power supply and distribution
- Field devices
- Other field devices
 - Additional Ethernet devices
 - PROFINET IO
 - Drives
 - Encoders
 - Gateway
 - I/O
 - Phoenix Contact
 - ILC 131 ETH
 - ILC 131 ETH XC
 - ILC 151 ETH
 - ILC 151 ETH XC
 - Ident Systems
 - Sensors
 - PROFIBUS DP

Hardware catalog Online tools Tasks Libraries

Information

Connected to PLC_1, via address IP=10...

Project tree

PassoPassoPhoenix ▶ PLC_1 [CPU 1214C DC/DC/DC]

Devices

- PassoPassoPhoenix
 - Add new device
 - Devices & networks
 - PLC_1 [CPU 1214C ...]
 - Device configurat...
 - Online & diagnost...
 - Program blocks
 - Technology objects
 - External source file:
 - PLC tags
 - PLC data types
 - Watch and force t...
 - Online backups
 - Traces
 - Device proxy data
 - Program info
 - PLC alarm text lists
 - Local modules
 - Distributed I/O
 - Ungrouped devices
 - Common data
 - Documentation setti...
 - Languages & resource
 - Online access
 - Card Reader/USB memory

Online access

▼ Diagnostics

- General
- Diagnostics status
- Diagnostics buffer
- Cycle time
- Memory
- PROFINET interface [X1]
- Functions

Diagnostics buffer

Events

Display CPU Time Stamps in PG/PC local time

No.	Date and time	Event		
1	11/27/2017 1:51:56.736 PM	Follow-on operating mode change - CPU changes from STARTUP to RUN m...	✓	!
2	11/27/2017 1:51:56.715 PM	:IO device failure - IO device not found	✗	!
3	11/27/2017 1:51:05.828 PM	Communication initiated request: WARM RESTART - CPU changes from STO...	✓	!
4	11/27/2017 1:51:05.828 PM	New startup information - Current CPU operating mode: STOP	✓	!
5	11/27/2017 1:51:02.828 PM	New startup information - Current CPU operating mode: STOP	✓	!
6	11/27/2017 1:51:01.321 PM	New startup information - Current CPU operating mode: STOP	✓	!
7	11/27/2017 1:50:57.001 PM	New startup information - Current CPU operating mode: STOP	✓	!
8	11/27/2017 1:50:56.100 PM	Follow-on operating mode change - CPU changes from STOP to STOP mode	✓	!
9	11/27/2017 1:50:54.197 PM	New startup information - Current CPU operating mode: STOP	✓	!

Freeze display

Details on event:

Details on event: 2 of 50 Event ID: 16# 02:39CB

Module: remotatete

Rack/slot: Rack --- / Slot ---

Description: Error: IO device failure - IO device not found

ILC-131-ETH

Help on event:

The IO device specified in the detailed information has failed or is not present. Check whether the failure belongs to an intended maintenance intervention. Check whether the failure occurs once or is repeatedly coming/going. Check whether there are more device failures and locate the failed device(s) in the IOSystem topology. Regard special device types (e.g. I devices, IE-IE-IOC)

Remedy: Check power supply, network wiring and connectors.

Project tree

PassoPassoPhoenix > Ungrouped devices > ILC-131-ETH [ILC 131 ETH]

Devices

- PassoPassoPhoenix
 - Add new device
 - Devices & networks
 - PLC_1 [CPU 1214C DC/DC/DC]
 - Device configuration
 - Online & diagnostics
 - Program blocks
 - Technology objects
 - External source files
 - PLC tags
 - PLC data types
 - Watch and force tables
 - Online backups
 - Traces
 - Device proxy data
 - Program info
 - PLC alarm text lists
 - Local modules
 - Distributed I/O
 - Ungrouped devices
 - ILC-131-ETH [ILC 131 ETH]
 - Device configuration
 - Online & diagnostics
 - ILC-131-ETH [ILC 131 ETH]
 - IO256_1
 - Common data
 - Documentation settings
 - Languages & resources
 - Online access
 - Card Reader/USB memory

Diagnostics

- General
 - Diagnostics status
 - Channel diagnostics
- Functions

General

Module

Short designation:

Article number:

Hardware:

Firmware:

Firmware expansion:

Rack:

Slot:

Module information

Module name:

Plant designation:

Location ID:

Installation date:

Additional information:

Manufacturer information

Manufacturer description:

Serial number:

Copyright entry:

Profile:

Profile details:

Online & Diagnostics

Online tools Tasks Libraries

Project tree

Devices

- PassoPassoPhoenix
 - Add new device
 - Devices & networks
 - PLC_1 [CPU 1214C DC/DC/DC]
 - Device configuration
 - Online & diagnostics
 - Program blocks
 - Technology objects
 - External source files
 - PLC tags
 - PLC data types
 - Watch and force tables
 - Online backups
 - Traces
 - Device proxy data
 - Program info
 - PLC alarm text lists
 - Local modules
 - Distributed I/O
 - Ungrouped devices
 - ILC-131-ETH [ILC 131 ETH]
 - Device configuration
 - Online & diagnostics
 - ILC-131-ETH [ILC 131 ETH]
 - IO256_1
 - Common data
 - Documentation settings
 - Languages & resources
 - Online access
 - Card Reader/USB memory

PassoPassoPhoenix > Ungrouped devices > ILC-131-ETH [ILC 131 ETH]

Diagnostics

- General
- Diagnostic status
- Channel diagnostics

Functions

- Assign IP address
- Assign PROFINET device na...
- Reset to factory settings

Assign PROFINET device name _____

Configured PROFINET device

PROFINET device name:

Device type:

Online access

Type of the PG/PC interface:

PG/PC interface:

Device filter

- Only show devices of the same type
- Only show devices with bad parameter settings
- Only show devices without names

Accessible devices in the network:

IP address	MAC address	Device	PROFINET device name	Status
10.0.9.2	00-A0-45-91-4A-CF	ILC 131 E...	remota1	⚠ Device name is different

LED flashes

File Edit View Project Build Online Extras ?



Libraries

- Data Types
 - sys_flag_types
- Logical POU's
 - Diag_Onboard
 - FB_4AO_Module
 - FB_4AI_Module
 - FB_8DO_Module
 - FB_8DI_Module
 - PROFINET_Map_IOS
 - Main

Project Hardware

Info Dialog

***** ENTRADA ONBOARD CONECTADOS A VARIÁVELS AUXILIARES *****

Resource POU's Force Settings

Version
 PLC: ILC 131 ETH 2.2.0.20237
 Firmware: V. 4.42.04 11/26/15 HW/01

Application
 Project: EX_ILC_131_PN_Slave Resource: STD_RES
 Build date: 11/27/2017 1:17:31 PM Configuration: STD_CNF
 Bootproject: EX_ILC_131_PN_Slave Source on PLC: No

PLC		Memory	
PLC state:	Running	Program:	196.608 Bytes; 193.684 Bytes free (99%)
Errors:	None	Data:	196.604 Bytes; 194.464 Bytes free (99%)
Timer resolution:	1000 µs	Retain:	8.184 Bytes; 8.184 Bytes free (100%)
Default task cycle:	4 ms		
CPU load:	0,1%		
Variables forced:	No		
Logic Analyzer:	Inactive		

Breakpoints
 Reset breakpoints

Close Help

Control

STD_RES

State: Running

Stop	Cold
Reset	Warm
Error	Hot
Download	Upload
More...	Info
Close	Help

Code: 2924 bytes
 Data: 0 bytes
 Location Image: 41604 bytes
 Data: 2264 bytes

Process for Download Changes and Updating CO cache and Download Bootproject ended for reason...

Variable	Value
Watch 1	
Watch 2	
Watch 3	
Watch 4	
Watch 5	
Watch 6	
Watch 7	
Watch 8	
Watch 9	
Watch 10	

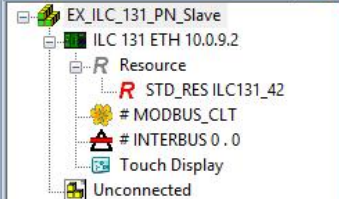


File Edit View Project Build Online Extras ?

Open Proje... Save Messages XReferences

Make Debug on/off Project Co... IEC Progra... Bus Config... Process D...

Bus Structure



Device Catalog



Enter search criteria

All

Device Details

EX_ILC_131_PN_Slave \Project\

Project name	Value
Project name	EX_ILC_131_PN_Slave
Creator	7WRNZF
Computer name at project creation	PXCSW-N0082
MULTIPROG version at project creation	5.51.8.0
PC WORX version at project creation	PC WORX EXPRESS 6.30.1503
Creation date	2015-09-22T08:50:19+01:00
Last editor	brrr03
Computer name at last project backup	BR-SPO-EXT-N005
MULTIPROG version at last project backup	5.51.245.0
PC WORX version at last project backup	PC WORX EXPRESS 6.30.1914
Date of last project backup	2017-11-27T13:23:33-03:00
Domain Postfix	
Template for DNS name creation	
First IP Address	10.0.9.1
Last IP-Address	10.0.9.254
Subnetmask	255.255.0.0
Default Gateway	10.0.9.100
Use DHCP	No

Project

Required memory for Program Code: 2924 bytes

Required memory for Retain Data: 0 bytes

Required memory for the Application Image: 41604 bytes

Predicted memory usage for Data: 2264 bytes

Process for Download Check and Updating CP cables and Download Postprocessor coded for resource ISTD_GIE STD_RES1 at 27/11/2017 12:17:43

Build Errors Warnings Info PLC Errors Print Bus Configurator

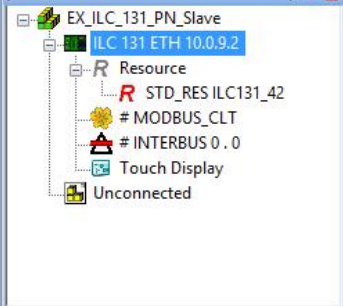
For Help, press F1

C: >2GB

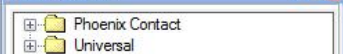




Bus Structure



Device Catalog



Enter search criteria

All

Device Details

ILC 131 ETH 10.0.9.2 \IP Settings\

Name	Value
Vendor	Phoenix Contact
Designation	ILC 131 ETH
Functional description	Inline Controller for Ethernet Networks Wit...
Device type	PLC
Device family	ILC1xx
Order number	2700973
Revision	00/4.20
Station Name	
Device Name	remota1
Module Equipment ID	1
LAN1	
DNS Name	remota1
MAC Address	
IP Address	10.0.9.2
Subnetmask	255.255.0.0
Default Gateway	10.0.9.100

IP Settings
 Extended Settings
 Communication
 IP Assignment
 CPU Service Editor
 Terminal Points
 Bus interfaces
 Data sheet

Required memory for Program Code: 2924 bytes

Required memory for Retain Data: 0 bytes

Required memory for the Application Image: 41604 bytes

Predicted memory usage for Data: 2264 bytes

Message Window: Press for Download, Check and Redesign CPU graphs and Download Bootloader coded for resource ILC131 STD_RES1 at 27/11/2017 12:17:43

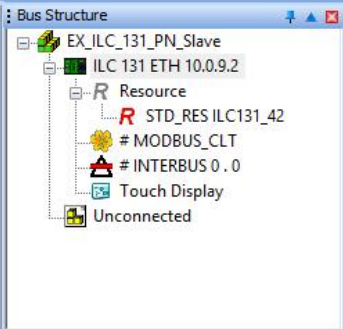
Build Errors Warnings Info PLC Errors Print Bus Configurator

For Help, press F1

C: >2GB



13:26
27/11/2017



Device Details

ILC 131 ETH 10.0.9.2 \Communication\

Interface Type



Connection Name

Manual Input

IP Address

10 . 0 . 9 . 2

Subnet Mask

255 . 255 . 0 . 0

Gateway Address

10 . 0 . 9 . 100

 use virtual LAN

Host Type: ILC 131 ETH

Test

Apply

Help

IP Settings Extended Settings Communication IP Assignment CPU Service Editor Terminal Points Bus interfaces Data sheet

Required memory for Program Code: 2924 bytes

Required memory for Retain Data: 0 bytes

Required memory for the Application Image: 41604 bytes

Predicted memory usage for Data: 2264 bytes

Message for Download Check and Updating CPU cache and Download Bootloader coded for resource ISTD_GIE STD_RES1 at 27/11/2017 12:17:43

Build Errors Warnings Info PLC Errors Print Bus Configurator

For Help, press F1

C: >2GB

13:30
27/11/2017

File Edit View Project Build Online Extras ?



Bus Structure

- EX_ILC_131_PN_Slave
 - ILC 131 ETH 10.0.9.2
 - Resource
 - STD_RES ILC131_42
 - # MODBUS_CLT
 - # INTERBUS 0.0
 - Touch Display
 - Unconnected

Device Catalog

- Phoenix Contact
- Universal

Enter search criteria

All

Device Details

ILC 131 ETH 10.0.9.2 \Extended Settings\

- Extended Settings
 - Ethernet
 - SNMP agent
 - PROFINET device activation
 - Web server

Settings

PROFINET device activated

Read Send

After changing this setting the controller must be restarted to apply the new setting.

Offline

IP Settings Extended Settings Communication IP Assignment CPU Service Editor Terminal Points Bus interfaces Data sheet

Message Window

- Required memory for Program Code: 2924 bytes
- Required memory for Retain Data: 0 bytes
- Required memory for the Application Image: 41604 bytes
- Predicted memory usage for Data: 2264 bytes

Press for Download, Check and Redefine CPU cache and Download Bootloader coded for resource I6TD-01E-STD-RES1 at 27/11/2017 12:17:43

Build Errors Warnings Info PLC Errors Print Bus Configurator



Bus Structure

- EX_ILC_131_PN_Slave
 - ILC 131 ETH 10.0.9.2
 - Resource
 - STD_RES ILC131_42
 - MODBUS_CLT
 - INTERBUS 0.0
 - Touch Display
 - Unconnected

Device Catalog

- Phoenix Contact
- Universal

Enter search criteria

All

Device Details

ILC 131 ETH 10.0.9.2 \Extended Settings\

- Extended Settings
 - Ethernet
 - SNMP agent
 - PROFINET device activation
 - Web server

DNS name

remota1

Real-time Clock Settings

Time: 13:31:57

Date: segunda-feira, 27 de novembro de 2017

Settings

Activate Network Settings

FTP

IP Settings | Extended Settings | Communication | IP Assignment | CPU Service Editor | Terminal Points | Bus interfaces | Data sheet

Message Window

- Required memory for Program Code: 2924 bytes
- Required memory for Retain Data: 0 bytes
- Required memory for the Application Image: 41604 bytes
- Predicted memory usage for Data: 2264 bytes

Process for Download Complete and Updating CPU memory and Download Postprocessor ended for resource ILC131_ETH STD_RES at 27/11/2017 13:32:43

Build Errors Warnings Info PLC Errors Print Bus Configurator





Bus Structure

- EX_ILC_131_PN_Slave
 - ILC 131 ETH 10.0.9.2
 - Resource
 - STD_RES ILC131_42
 - MODBUS_CLT
 - INTERBUS 0.0
 - Touch Display
 - Unconnected

Device Catalog

- Phoenix Contact
- Universal

Enter search criteria

All

Device Details

ILC 131 ETH 10.0.9.2 \Extended Settings\

- Extended Settings
 - Ethernet
 - SNMP agent
 - PROFINET device activation
 - Web server

Settings

PROFINET device activated

Read

Send

After changing this setting the controller must be restarted to apply the new setting.

Offline

- IP Settings
- Extended Settings
- Communication
- IP Assignment
- CPU Service Editor
- Terminal Points
- Bus interfaces
- Data sheet

Required memory for Program Code: 2924 bytes

Required memory for Retain Data: 0 bytes

Required memory for the Application Image: 41604 bytes

Predicted memory usage for Data: 2264 bytes

Message for Download Check and Updating CPU cache and Download Postprocessor coded for resource ILC131_ETH_10.0.9.2 on 27/11/2017 12:17:43

Build Errors Warnings Info PLC Errors Print Bus Configurator

For Help, press F1

C: >2GB



Name	Type	Usage	Description	Address	Init	Retain	PDD	OPC	Hid...	Init...	Default Hid...
KEY_SWITCH_RESET	BOOL	VAR_GLOBAL	Start/stop switch in MRESET position	%MX1.60178.0		<input type="checkbox"/>	<input type="checkbox"/>	<input type="checkbox"/>	<input type="checkbox"/>	<input type="checkbox"/>	
KEY_SWITCH_STOP	BOOL	VAR_GLOBAL	Start/stop switch in STOP position	%MX1.60179.0		<input type="checkbox"/>	<input type="checkbox"/>	<input type="checkbox"/>	<input type="checkbox"/>	<input type="checkbox"/>	
KEY_SWITCH_RUN_PROG	BOOL	VAR_GLOBAL	Start/stop switch in RUN/PROG position	%MX1.60181.0		<input type="checkbox"/>	<input type="checkbox"/>	<input type="checkbox"/>	<input type="checkbox"/>	<input type="checkbox"/>	
RTC_HOURS	INT	VAR_GLOBAL	System time (hours)	%MW1.60060		<input type="checkbox"/>	<input type="checkbox"/>	<input type="checkbox"/>	<input type="checkbox"/>	<input type="checkbox"/>	
RTC_MINUTES	INT	VAR_GLOBAL	System time (minutes)	%MW1.60062		<input type="checkbox"/>	<input type="checkbox"/>	<input type="checkbox"/>	<input type="checkbox"/>	<input type="checkbox"/>	
RTC_SECONDS	INT	VAR_GLOBAL	System time (seconds)	%MW1.60064		<input type="checkbox"/>	<input type="checkbox"/>	<input type="checkbox"/>	<input type="checkbox"/>	<input type="checkbox"/>	
RTC_DAY	INT	VAR_GLOBAL	System time (day)	%MW1.60068		<input type="checkbox"/>	<input type="checkbox"/>	<input type="checkbox"/>	<input type="checkbox"/>	<input type="checkbox"/>	
RTC_MONTH	INT	VAR_GLOBAL	System time (month)	%MW1.60070		<input type="checkbox"/>	<input type="checkbox"/>	<input type="checkbox"/>	<input type="checkbox"/>	<input type="checkbox"/>	
RTC_YEAR	INT	VAR_GLOBAL	System time (year)	%MW1.60072		<input type="checkbox"/>	<input type="checkbox"/>	<input type="checkbox"/>	<input type="checkbox"/>	<input type="checkbox"/>	
PND_S1_PLC_RUN	BOOL	VAR_GLOBAL	Status of the higher-level control system	%IX63972.0		<input type="checkbox"/>	<input type="checkbox"/>	<input type="checkbox"/>	<input type="checkbox"/>	<input type="checkbox"/>	
PND_S1_VALID_DATA_CY...	BOOL	VAR_GLOBAL	IO Controller has established the connection	%IX63973.0		<input type="checkbox"/>	<input type="checkbox"/>	<input type="checkbox"/>	<input type="checkbox"/>	<input type="checkbox"/>	
PND_S1_OUTPUT_STATUS...	BOOL	VAR_GLOBAL	IOP status of the higher-level control system	%IX63974.0		<input type="checkbox"/>	<input type="checkbox"/>	<input type="checkbox"/>	<input type="checkbox"/>	<input type="checkbox"/>	
PND_S1_DATA_LENGTH	WORD	VAR_GLOBAL	Process data length	%IW63976		<input type="checkbox"/>	<input type="checkbox"/>	<input type="checkbox"/>	<input type="checkbox"/>	<input type="checkbox"/>	
PND_S1_OUTPUTS	PND_IO_256	VAR_GLOBAL	Output process data	%QB63988		<input type="checkbox"/>	<input type="checkbox"/>	<input type="checkbox"/>	<input type="checkbox"/>	<input type="checkbox"/>	
PND_S1_INPUTS	PND_IO_256	VAR_GLOBAL	Input process data	%IB63988		<input type="checkbox"/>	<input type="checkbox"/>	<input type="checkbox"/>	<input type="checkbox"/>	<input type="checkbox"/>	
PND_IO_DRIVEN_BY_PLC	INT	VAR_GLOBAL	Number of the PLC currently connected with the PNI0 Device	%IW63978		<input type="checkbox"/>	<input type="checkbox"/>	<input type="checkbox"/>	<input type="checkbox"/>	<input type="checkbox"/>	
PND_RESET_FACTORY_SE...	WORD	VAR_GLOBAL	shows the bits of the kind of a reset to factory service	%MW3.61060		<input type="checkbox"/>	<input type="checkbox"/>	<input type="checkbox"/>	<input type="checkbox"/>	<input type="checkbox"/>	
IB_DEVICE_PARAM_ACTIV...	BOOL	VAR_GLOBAL	Interbus device configuration activated	%MX1.60120.0		<input type="checkbox"/>	<input type="checkbox"/>	<input type="checkbox"/>	<input type="checkbox"/>	<input type="checkbox"/>	
IB_DEVICE_PARAM_READY	BOOL	VAR_GLOBAL	Interbus device configuration completed	%MX1.60121.0		<input type="checkbox"/>	<input type="checkbox"/>	<input type="checkbox"/>	<input type="checkbox"/>	<input type="checkbox"/>	
IB_DEVICE_PARAM_ERROR	BOOL	VAR_GLOBAL	Interbus device configuration error	%MX1.60122.0		<input type="checkbox"/>	<input type="checkbox"/>	<input type="checkbox"/>	<input type="checkbox"/>	<input type="checkbox"/>	
ARPMGR_APPLICATION_ID	STRING	VAR_GLOBAL				<input checked="" type="checkbox"/>	<input type="checkbox"/>	<input type="checkbox"/>	<input type="checkbox"/>	<input type="checkbox"/>	

(*Recebe as variáveis do PROFINET MASTER*)

PND_S1_INPUTS[0] ————— Byte_0_PN_Master
PND_S1_INPUTS[1] ————— word_1_PN_Master.B0
PND_S1_INPUTS[2] ————— word_1_PN_Master.B1

(*As variáveis lidas pelo PROFINET MASTER*)

Byte_0_PN_Slave ————— PND_S1_OUTPUTS[0]
Word_1_PN_Slave.B0 ————— PND_S1_OUTPUTS[1]
Word_1_PN_Slave.B1 ————— PND_S1_OUTPUTS[2]